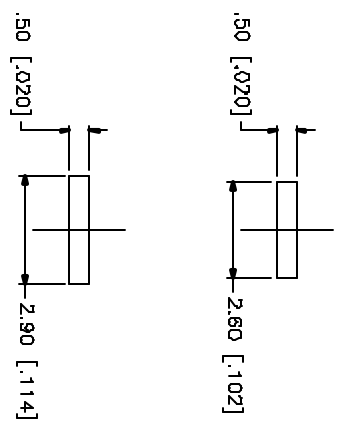
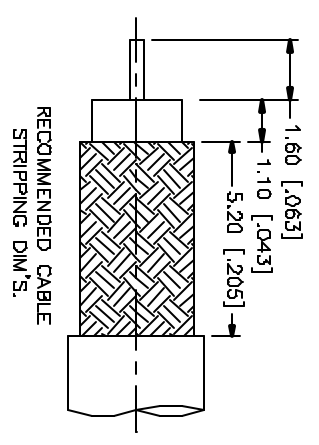
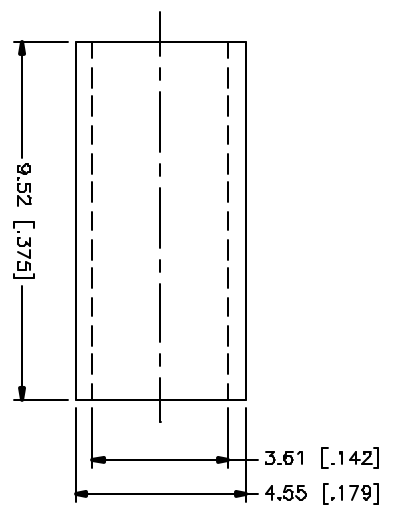
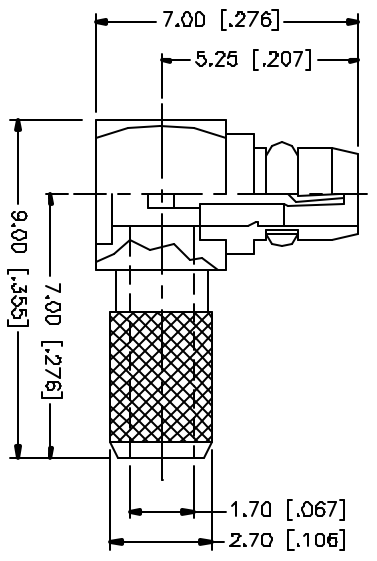


REV.	DATE	DESCRIPTION
NC	05/01/04	INITIAL RELEASE



CRIMP NOTES:  
 1. CRIMPED FERRULE  
 HEX CRIMP SIZE .151"  
 2. CONTACT PIN TO SOLDER

QTY	FINISH	MATERIAL	DESCRIPTION
1	GOLD	COPPER	FERRULE
1	GOLD	BRASS	COVER
1	NATURAL	TEFLON	INSULATOR
1	GOLD	BER, COPPER	RETAINER RING
1	GOLD	BRASS	CONTACT PIN
1	NATURAL	TEFLON	INSULATOR
1	GOLD	BRASS	HOUSING/BODY
			DESCRIPTION

APPROVALS	DATE
DRAWN G.R.S.	05/01/04
CHECKED	
ISSUED	
SHEET 1 OF 1	

UNLESS OTHERWISE SPECIFIED, DIMENSIONS ARE IN INCHES AND THE DECIMAL FRACTION SHALL FOLLOW THE DIMENSION SPECIFIED.
UNLESS OTHERWISE SPECIFIED, DIMENSIONS FOR MILLIMETER ARE: 0.5 - 8mm ± 0.20mm 8 - 30mm ± 0.40mm 30 - 120mm ± 0.50mm
UNLESS OTHERWISE SPECIFIED, DIMENSIONS FOR INCH ARE: .020 - .315 = ± 0.007" .315 - 1.180 = ± 0.015" 1.180 - 4.724 = ± 0.020"

CAD FILE	DWG. NO.	REV.	SIZE	SCALE
C:/262/262111.DWG	262111.DWG	NC	A	NA

**Amphenol Connex**

PART DESCRIPTION  
**MMCX R/A CRIMP PLUG**  
 (FOR RG-316U/D CABLE)

PART NO. 262111